



**SCOTTISHPOWER
RENEWABLES**

East Anglia TWO Offshore Windfarm

National Grid GIS Substation

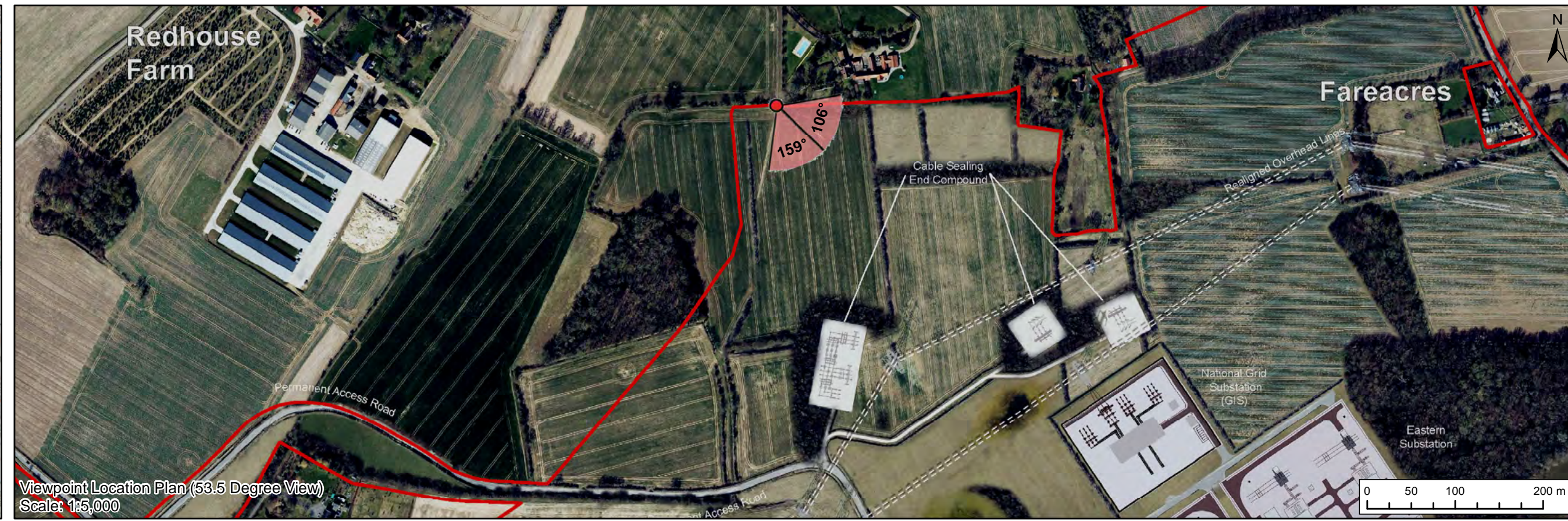
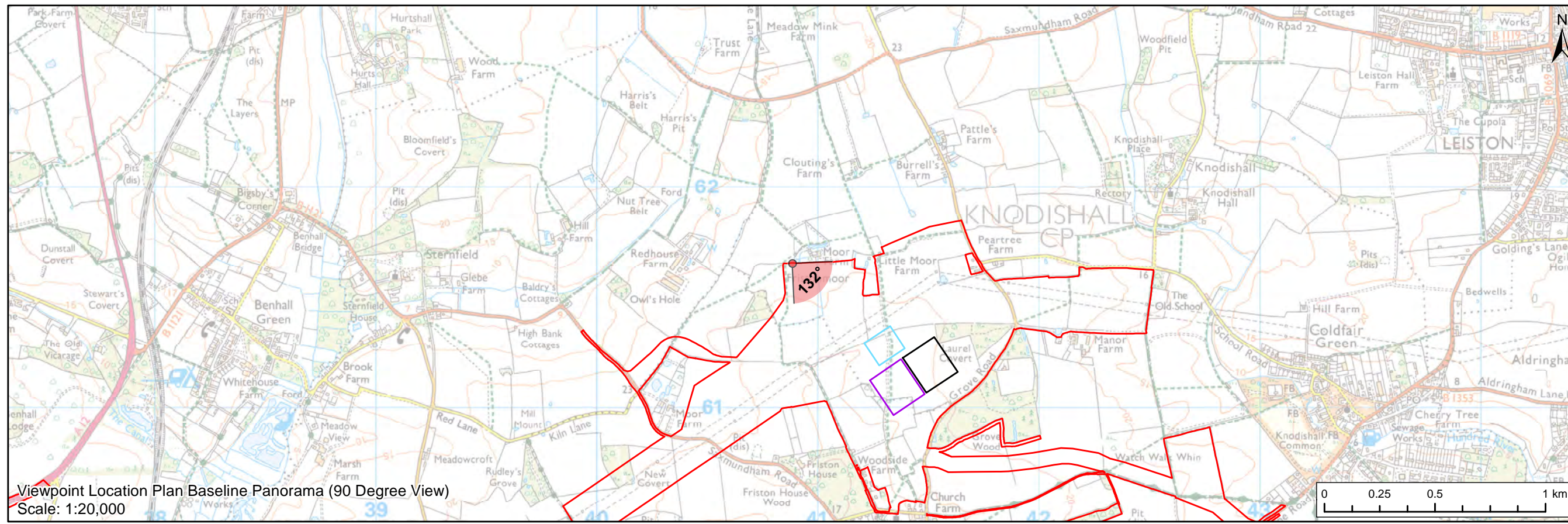
Photomontages:

**Figure 29.17 Update Viewpoint 5 Public
Rights of Way, near Moor Farm**

Applicant: East Anglia TWO Limited
Document Reference: ExA.AS-28.D8.V1_03
SPR Reference: EA2-DWF-ENV-REP-IBR-001095_03

Date: 25th March 2021
Revision: Version 1
Author: ScottishPower Renewables

**Applicable to
East Anglia TWO**



Legend

- East Anglia ONE North and East Anglia TWO Onshore Development Area
- Eastern Substation (190m x 170m)
- Western Substation (190m x 170m)
- Indicative National Grid GIS Substation Location

Viewpoint:

- ▲ 90 Degree Field of View Viewpoint
- ▼ 53.5 Degree Field of View Viewpoint



Prepared:	LA	Scale @ A3
Checked:	SM	
Approved:	LT	

Source: © Crown copyright and database rights 2020. Ordnance Survey 100031972.
This map has been produced to the latest known information at the time of issue, and has been produced for your information only. Please consult with the SPN Onshore GIS team to ensure the content is still correct before using the information contained on this map. In the event of any error or omission, we accept no responsibility or liability, whether in contract, tort (including negligence) or otherwise in respect of any errors or omissions in the information contained in the map and shall not be liable for any loss, damage or expense caused by such errors or omissions.

East Anglia TWO		(Figure 29.17 - GIS Update)							
Viewpoint 5: Public Right of Way, near Moor Farm	<table border="1"> <tr> <td>Rev</td> <td>1</td> <td rowspan="3">Coordinate System: BNG Datum: OSGB36</td> </tr> <tr> <td>Date</td> <td>25/03/21</td> </tr> <tr> <td>Figure</td> <td>29.17a</td> </tr> </table>		Rev	1	Coordinate System: BNG Datum: OSGB36	Date	25/03/21	Figure	29.17a
Rev	1		Coordinate System: BNG Datum: OSGB36						
Date	25/03/21								
Figure	29.17a								



Baseline Photograph (53.5 Degree Field of View)

View flat at a comfortable arm's length

OS reference: 640884 E 261654 N
Eye level: 25 m AOD
Direction of view: 105.65°

Horizontal field of view: 53.5° (planar projection)
Principal viewing distance: 812.5 mm
Paper size: 841 x 297 mm (half A1)
Correct printed image size: 820 x 260 mm

Camera: Canon EOS 5D Mark II
Lens: 50mm (Canon EF 50mm f/1.4)
Camera height: 1.5 m AGL
Date and time: 22/02/2020, 13:47:28

Contains Ordnance Survey digital data © Crown copyright, All rights reserved 2020 Licence number 0100031673

Figure: 29.17a
Viewpoint 5: Public Right of Way, near Moor Farm



Baseline Photograph (53.5 Degree Field of View)

View flat at a comfortable arm's length

OS reference: 640884 E 261654 N
Eye level: 25 m AOD
Direction of view: 159.15°

Horizontal field of view: 53.5° (planar projection)
Principal viewing distance: 812.5 mm
Paper size: 841 x 297 mm (half A1)
Correct printed image size: 820 x 260 mm

Camera: Canon EOS 5D Mark II
Lens: 50mm (Canon EF 50mm f/1.4)
Camera height: 1.5 m AGL
Date and time: 22/02/2020, 13:47:28

Contains Ordnance Survey digital data © Crown copyright, All rights reserved 2020 Licence number 0100031673

Figure: 29.17a
Viewpoint 5: Public Right of Way, near Moor Farm



Visual representation of 1st year of operational phase
 Photomontage of the proposed eastern substation and National Grid GIS substation

View flat at a comfortable arm's length

OS reference:	640884 E 261654 N	Horizontal field of view:	53.5° (planar projection)	Camera:	Canon EOS 5D Mark II
Eye level:	25 m AOD	Principal viewing distance:	812.5 mm	Lens:	50mm (Canon EF 50mm f/1.4)
Direction of view:	105.65°	Paper size:	841 x 297 mm (half A1)	Camera height:	1.5 m AGL
		Correct printed image size:	820 x 260 mm	Date and time:	22/02/2020, 13:47:28

Contains Ordnance Survey digital data © Crown copyright, All rights reserved 2020 Licence number 0100031673

Figure: 29.17b
 Viewpoint 5: Public Right of Way, near Moor Farm



Visual representation of 1st year of operational phase
 Photomontage of the proposed eastern substation and National Grid GIS substation

View flat at a comfortable arm's length

OS reference:	640884 E 261654 N	Horizontal field of view:	53.5° (planar projection)	Camera:	Canon EOS 5D Mark II
Eye level:	25 m AOD	Principal viewing distance:	812.5 mm	Lens:	50mm (Canon EF 50mm f/1.4)
Direction of view:	159.15°	Paper size:	841 x 297 mm (half A1)	Camera height:	1.5 m AGL
		Correct printed image size:	820 x 260 mm	Date and time:	22/02/2020, 13:47:28

Contains Ordnance Survey digital data © Crown copyright, All rights reserved 2020 Licence number 0100031673

Figure: 29.17b
Viewpoint 5: Public Right of Way, near Moor Farm



Visual representation of 15th year of operational phase
 Photomontage of the proposed eastern substation and National Grid GIS substation

View flat at a comfortable arm's length

OS reference:	640884 E 261654 N	Horizontal field of view:	53.5° (planar projection)	Camera:	Canon EOS 5D Mark II
Eye level:	25 m AOD	Principal viewing distance:	812.5 mm	Lens:	50mm (Canon EF 50mm f/1.4)
Direction of view:	105.65°	Paper size:	841 x 297 mm (half A1)	Camera height:	1.5 m AGL
		Correct printed image size:	820 x 260 mm	Date and time:	22/02/2020, 13:47:28

Contains Ordnance Survey digital data © Crown copyright, All rights reserved 2020 Licence number 0100031673

Figure: 29.17c
Viewpoint 5: Public Right of Way, near Moor Farm



Visual representation of 15th year of operational phase
 Photomontage of the proposed eastern substation and National Grid GIS substation

View flat at a comfortable arm's length

OS reference:	640884 E 261654 N	Horizontal field of view:	53.5° (planar projection)	Camera:	Canon EOS 5D Mark II
Eye level:	25 m AOD	Principal viewing distance:	812.5 mm	Lens:	50mm (Canon EF 50mm f/1.4)
Direction of view:	159.15°	Paper size:	841 x 297 mm (half A1)	Camera height:	1.5 m AGL
		Correct printed image size:	820 x 260 mm	Date and time:	22/02/2020, 13:47:28

Contains Ordnance Survey digital data © Crown copyright, All rights reserved 2020 Licence number 0100031673

Figure: 29.17c
Viewpoint 5: Public Right of Way, near Moor Farm



Visual representation of 1st year of operational phase
 Photomontage of the proposed eastern substation, western substation and National Grid GIS substation

View flat at a comfortable arm's length

OS reference:	640884 E 261654 N	Horizontal field of view:	53.5° (planar projection)	Camera:	Canon EOS 5D Mark II
Eye level:	25 m AOD	Principal viewing distance:	812.5 mm	Lens:	50mm (Canon EF 50mm f/1.4)
Direction of view:	105.65°	Paper size:	841 x 297 mm (half A1)	Camera height:	1.5 m AGL
		Correct printed image size:	820 x 260 mm	Date and time:	22/02/2020, 13:47:28

Contains Ordnance Survey digital data © Crown copyright, All rights reserved 2020 Licence number 0100031673

Figure: 29.17d
Viewpoint 5: Public Right of Way, near Moor Farm



Visual representation of 1st year of operational phase
 Photomontage of the proposed eastern substation, western substation and National Grid GIS substation

View flat at a comfortable arm's length

OS reference:	640884 E 261654 N	Horizontal field of view:	53.5° (planar projection)	Camera:	Canon EOS 5D Mark II
Eye level:	25 m AOD	Principal viewing distance:	812.5 mm	Lens:	50mm (Canon EF 50mm f/1.4)
Direction of view:	159.15°	Paper size:	841 x 297 mm (half A1)	Camera height:	1.5 m AGL
		Correct printed image size:	820 x 260 mm	Date and time:	22/02/2020, 13:47:28

Contains Ordnance Survey digital data © Crown copyright, All rights reserved 2020 Licence number 0100031673

Figure: 29.17d
Viewpoint 5: Public Right of Way, near Moor Farm



Visual representation of 15th year of operational phase
 Photomontage of the proposed eastern substation, western substation and National Grid GIS substation

View flat at a comfortable arm's length

OS reference:	640884 E 261654 N	Horizontal field of view:	53.5° (planar projection)	Camera:	Canon EOS 5D Mark II
Eye level:	25 m AOD	Principal viewing distance:	812.5 mm	Lens:	50mm (Canon EF 50mm f/1.4)
Direction of view:	105.65°	Paper size:	841 x 297 mm (half A1)	Camera height:	1.5 m AGL
		Correct printed image size:	820 x 260 mm	Date and time:	22/02/2020, 13:47:28

Contains Ordnance Survey digital data © Crown copyright, All rights reserved 2020 Licence number 0100031673

Figure: 29.17e
Viewpoint 5: Public Right of Way, near Moor Farm



Visual representation of 15th year of operational phase
 Photomontage of the proposed eastern substation, western substation and National Grid GIS substation

View flat at a comfortable arm's length

OS reference:	640884 E 261654 N	Horizontal field of view:	53.5° (planar projection)	Camera:	Canon EOS 5D Mark II
Eye level:	25 m AOD	Principal viewing distance:	812.5 mm	Lens:	50mm (Canon EF 50mm f/1.4)
Direction of view:	159.15°	Paper size:	841 x 297 mm (half A1)	Camera height:	1.5 m AGL
		Correct printed image size:	820 x 260 mm	Date and time:	22/02/2020, 13:47:28

Contains Ordnance Survey digital data © Crown copyright, All rights reserved 2020 Licence number 0100031673

Figure: 29.17e
Viewpoint 5: Public Right of Way, near Moor Farm



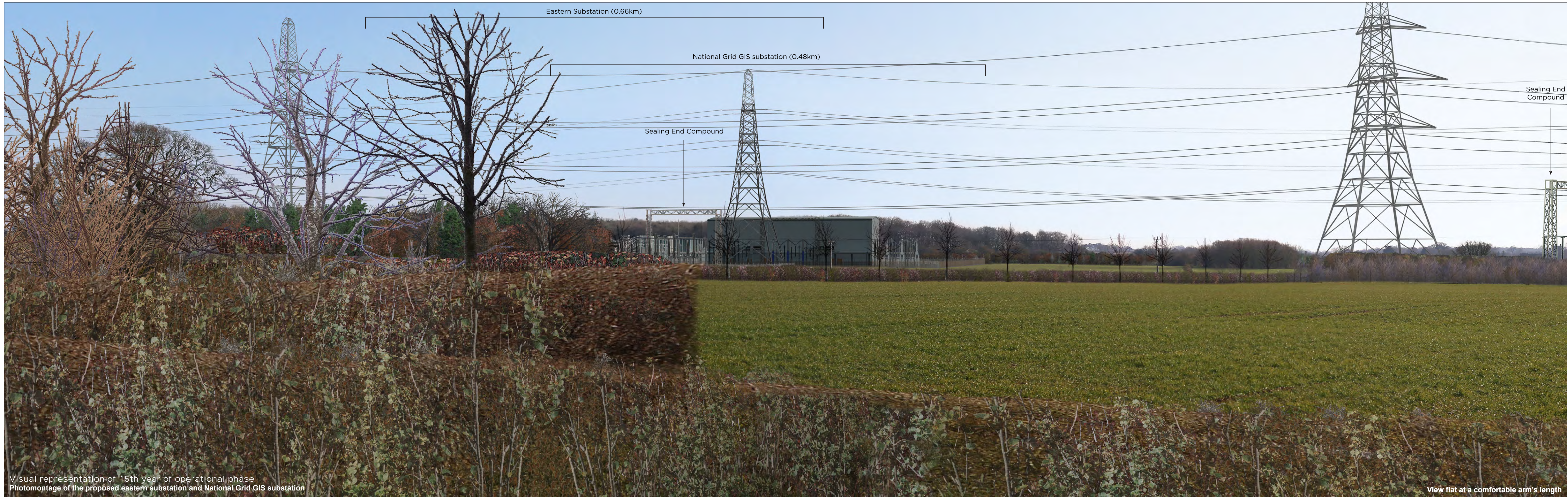
Visual representation of 1st year of operational phase
 Photomontage of the proposed eastern substation, western substation and National Grid GIS substation

View flat at a comfortable arm's length

OS reference:	640884 E 261654 N	Horizontal field of view:	53.5° (planar projection)	Camera:	Canon EOS 5D Mark II
Eye level:	25 m AOD	Principal viewing distance:	812.5 mm	Lens:	50mm (Canon EF 50mm f/1.4)
Direction of view:	132°	Paper size:	841 x 297 mm (half A1)	Camera height:	1.5 m AGL
		Correct printed image size:	820 x 260 mm	Date and time:	22/02/2020, 13:47:28

Contains Ordnance Survey digital data © Crown copyright, All rights reserved 2020 Licence number 0100031673

Figure: 29.17f
Viewpoint 5: Public Right of Way, near Moor Farm



Visual representation of 15th year of operational phase
 Photomontage of the proposed eastern substation and National Grid GIS substation

View flat at a comfortable arm's length

OS reference:	640884 E 261654 N	Horizontal field of view:	53.5° (planar projection)	Camera:	Canon EOS 5D Mark II
Eye level:	25 m AOD	Principal viewing distance:	812.5 mm	Lens:	50mm (Canon EF 50mm f/1.4)
Direction of view:	132°	Paper size:	841 x 297 mm (half A1)	Camera height:	1.5 m AGL
		Correct printed image size:	820 x 260 mm	Date and time:	22/02/2020, 13:47:28

Contains Ordnance Survey digital data © Crown copyright, All rights reserved 2020 Licence number 0100031673

Figure: 29.17g
Viewpoint 5: Public Right of Way, near Moor Farm



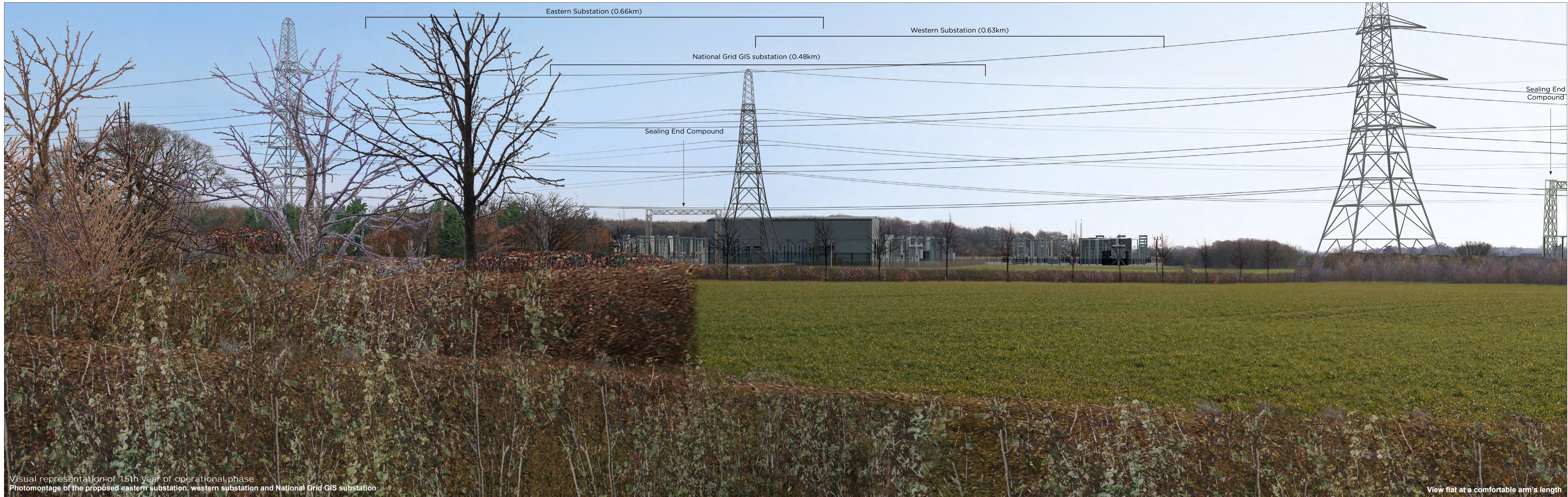
Visual representation of 1st year of operational phase
 Photomontage of the proposed eastern substation, western substation and National Grid GIS substation

View flat at a comfortable arm's length

OS reference:	640884 E 261654 N	Horizontal field of view:	53.5° (planar projection)	Camera:	Canon EOS 5D Mark II
Eye level:	25 m AOD	Principal viewing distance:	812.5 mm	Lens:	50mm (Canon EF 50mm f/1.4)
Direction of view:	132°	Paper size:	841 x 297 mm (half A1)	Camera height:	1.5 m AGL
		Correct printed image size:	820 x 260 mm	Date and time:	22/02/2020, 13:47:28

Contains Ordnance Survey digital data © Crown copyright, All rights reserved 2020 Licence number 0100031673

Figure: 29.17h
Viewpoint 5: Public Right of Way, near Moor Farm



Visual representation of 15th year of operational phase
 Photomontage of the proposed eastern substation, western substation and National Grid GIS substation

View flat at a comfortable arm's length

OS reference:	640884 E 261654 N	Horizontal field of view:	53.5° (planar projection)	Camera:	Canon EOS 5D Mark II
Eye level:	25 m AOD	Principal viewing distance:	812.5 mm	Lens:	50mm (Canon EF 50mm f/1.4)
Direction of view:	132°	Paper size:	841 x 297 mm (half A1)	Camera height:	1.5 m AGL
		Correct printed image size:	820 x 260 mm	Date and time:	22/02/2020, 13:47:28

Contains Ordnance Survey digital data © Crown copyright, All rights reserved 2020 Licence number 0100031673

Figure: 29.17i
Viewpoint 5: Public Right of Way, near Moor Farm